



ORLANDO REID

Clapham Manor Street, Clapham, London, Clapham,
SW4
£375,000



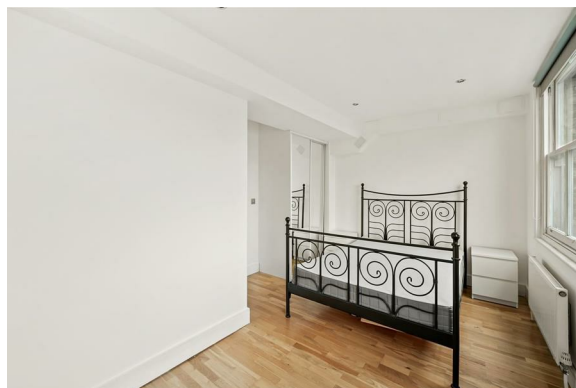
SUMMARY

Orlando Reid are pleased to present to the market this modern, one bedroom apartment set within the heart of Clapham.

The property is located a stones throw from the bustling high street, providing incredibly easy access to an plethora of local amenities, and fantastic transport connections - with an almost endless array of bus routes available, as well as being within approx. 0.3 of a mile to Clapham Common Underground.

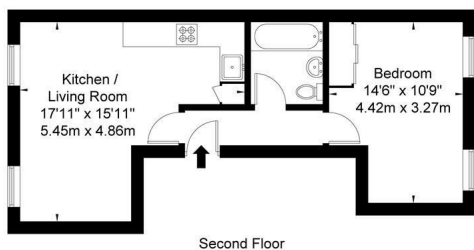
The property comprises an entrance hallway, spacious front reception, with a modern, fitted kitchen, double bedroom, and a bathroom.

The property is offered on a chain free basis, and flooded with natural light.



Clapham Manor Street SW4 6BX

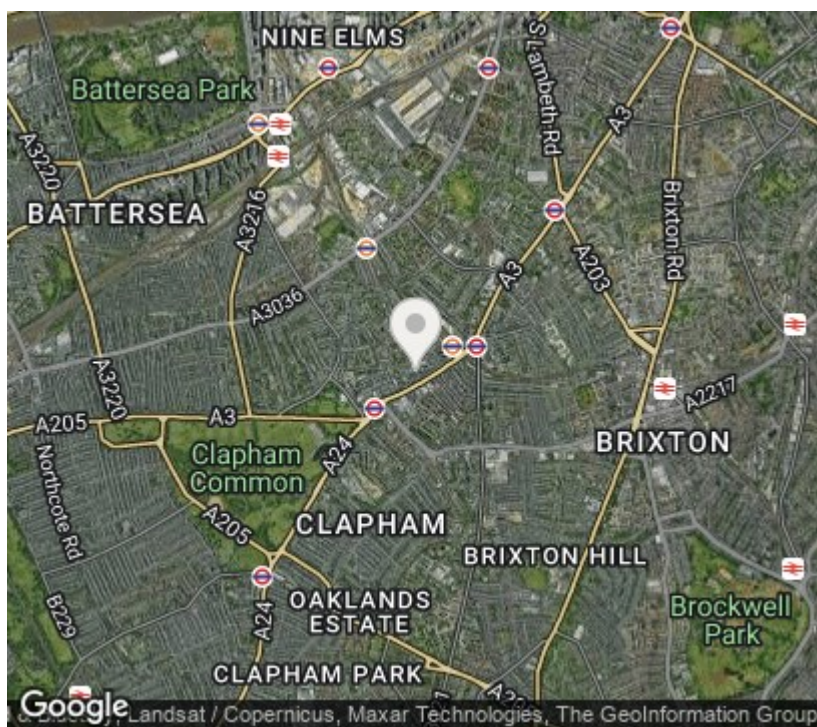
Approx Gross Internal Area = 40.4 sq m / 434 sq ft



Ref

Copyright
BLEU
PLAN

The Floor plan is not to scale and measurements and areas shown are approximate and therefore should be used for illustrative purposes only. The plan has been prepared in accordance with the RICS code of Measuring Practice and whilst we have confidence in the information provided it must not be relied on. If there is any aspect of particular importance, you should carry out or commission your own inspection of the property.
Copyright © BLEUPLAN



Orlando Reid Sales 1-3 Old Town, Clapham, London, SW4 0JT

Tel: 020 7627 5566

Email: sales@orlandoreid.co.uk

Agents Note: Whilst every care has been taken to prepare these sales particulars, they are for guidance purposes only. All measurements are approximate are for general guidance purposes only and whilst every care has been taken to ensure their accuracy, they should not be relied upon and potential buyers are advised to recheck the measurements.